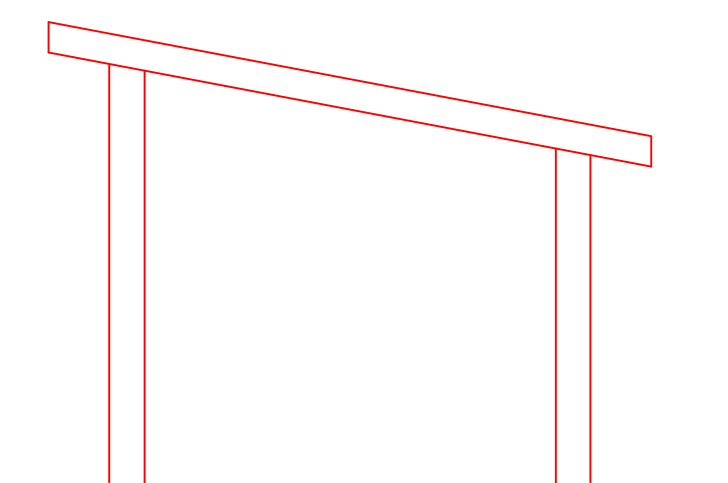
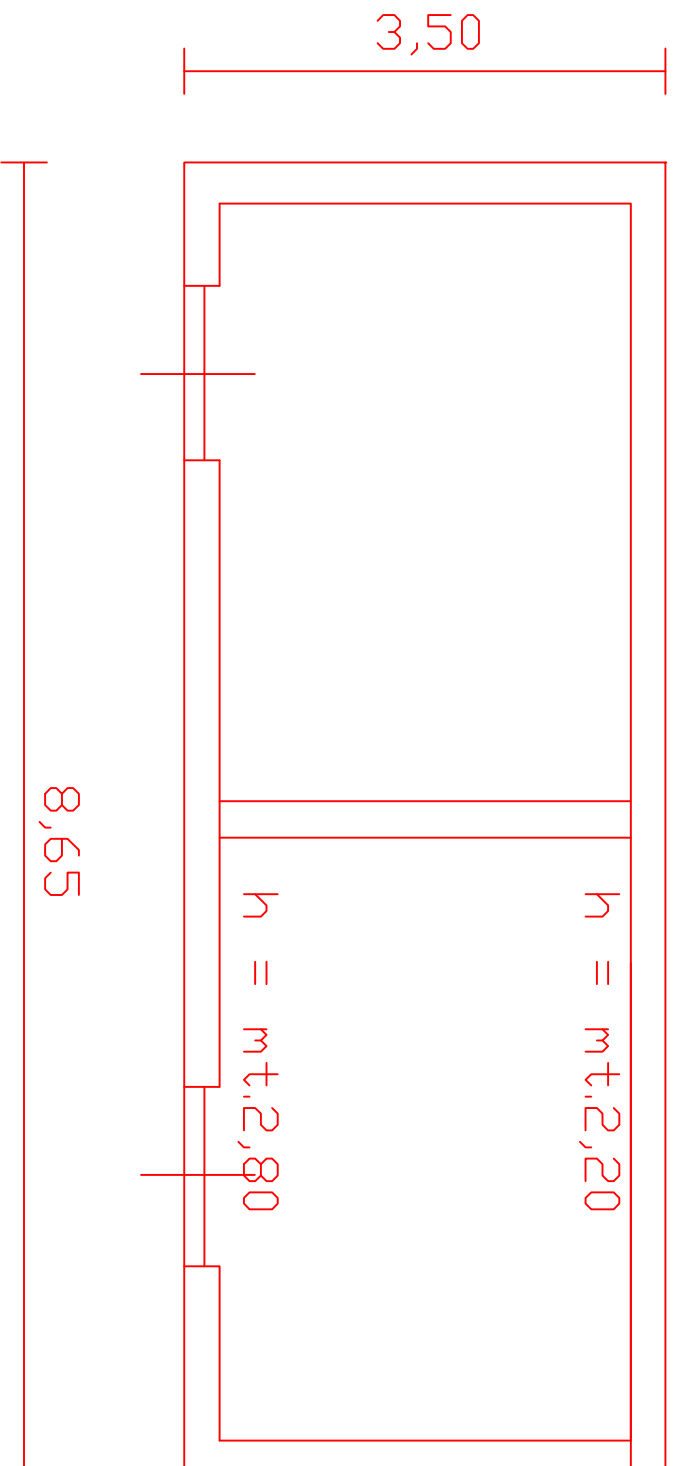
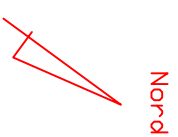


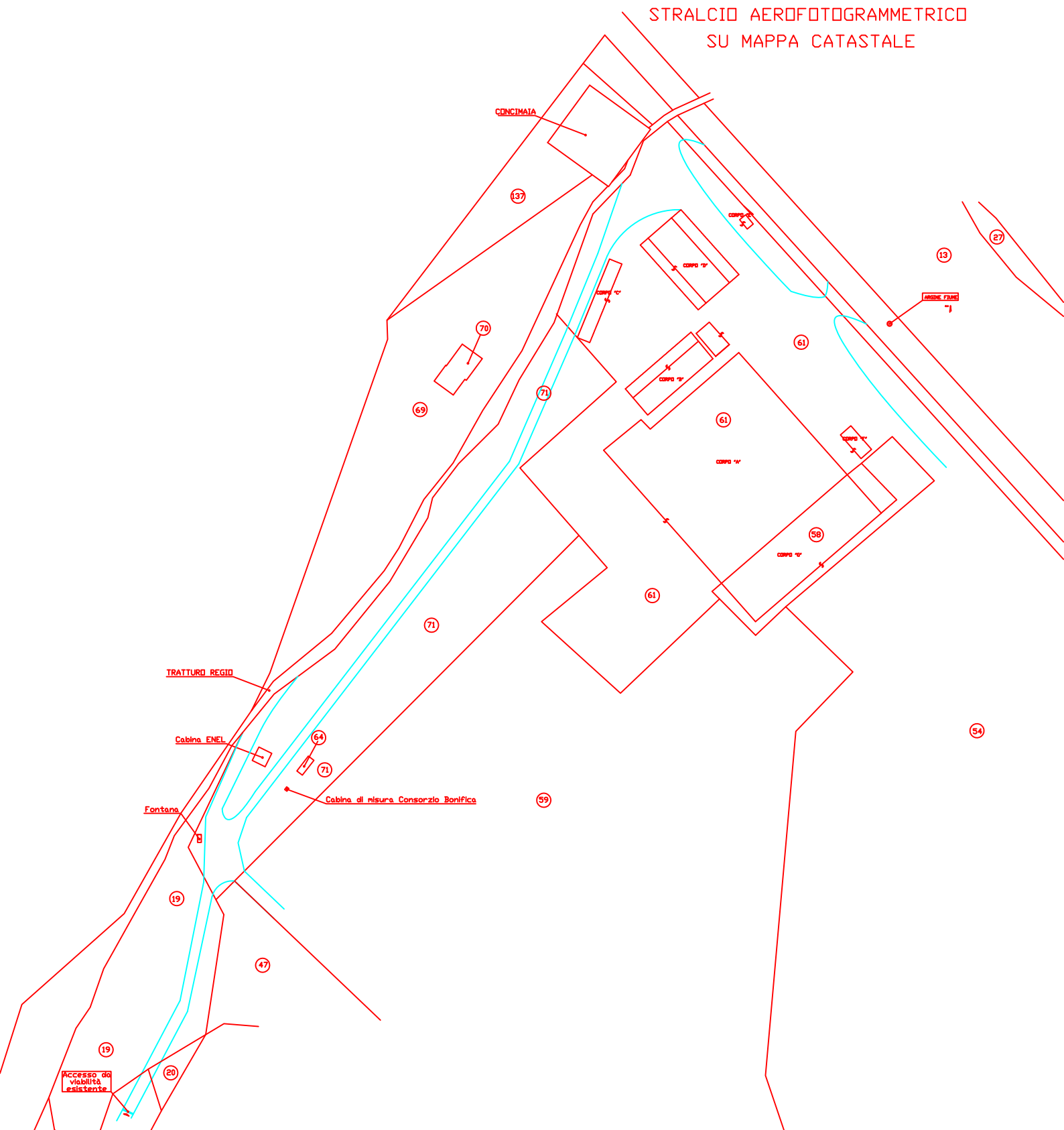
# STALLA - Part. 71



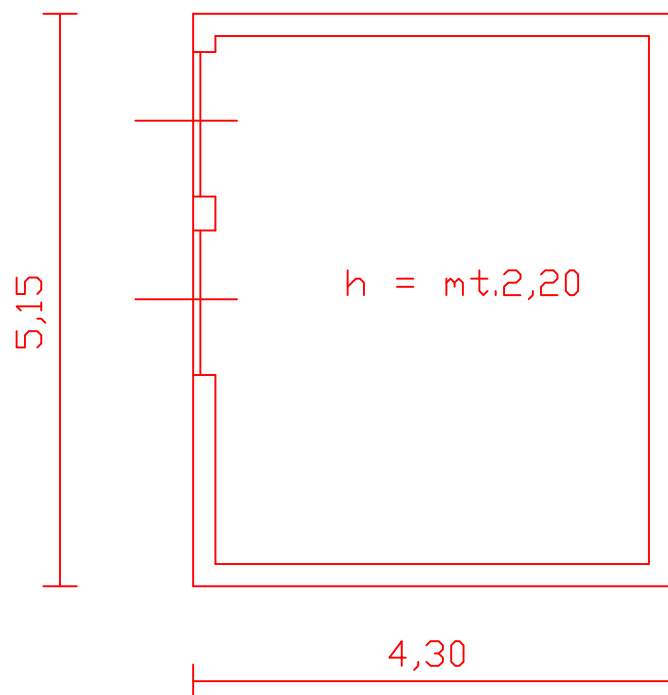
SUP. STALLA = mq. 30  
VOL. STALLA = mc. 76



STRALCIO AEROFOTOGRAMMETRICO  
SU MAPPA CATASTALE



## CABINA ENEL



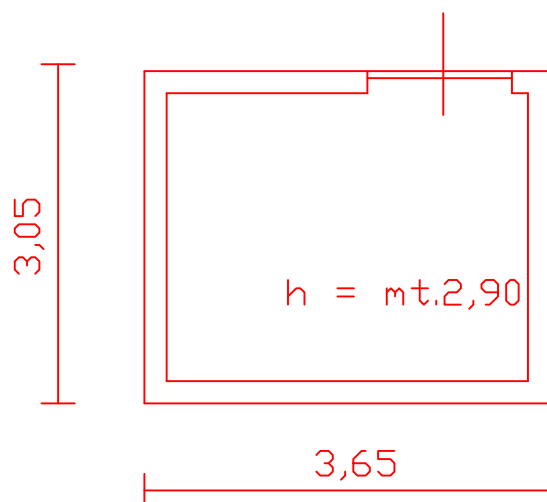
SUP. CABINA ENEL = mq. 22

VOL. CABINA ENEL = mc. 174

Nord



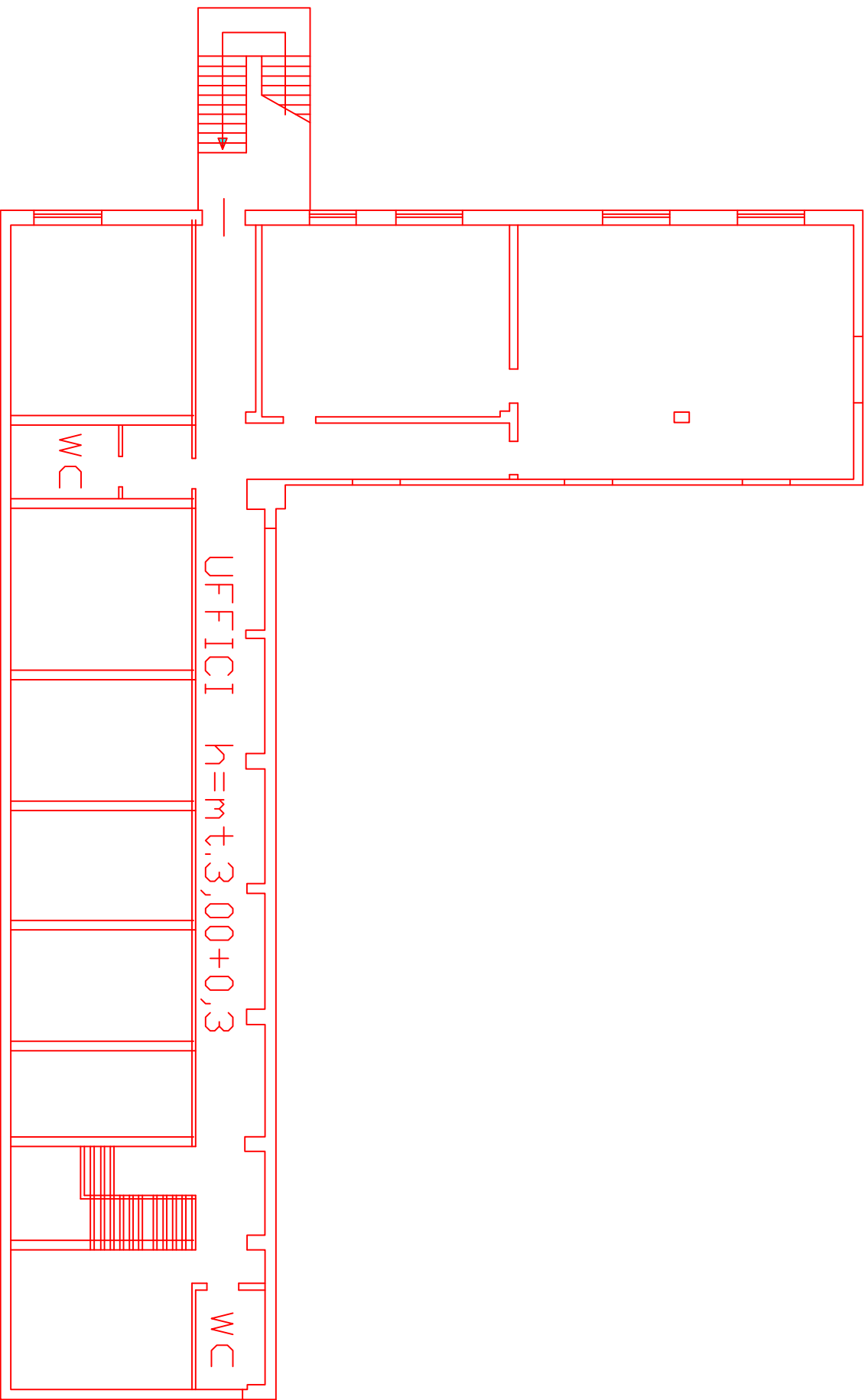
## CABINA MISURA CONS. BONIFICA



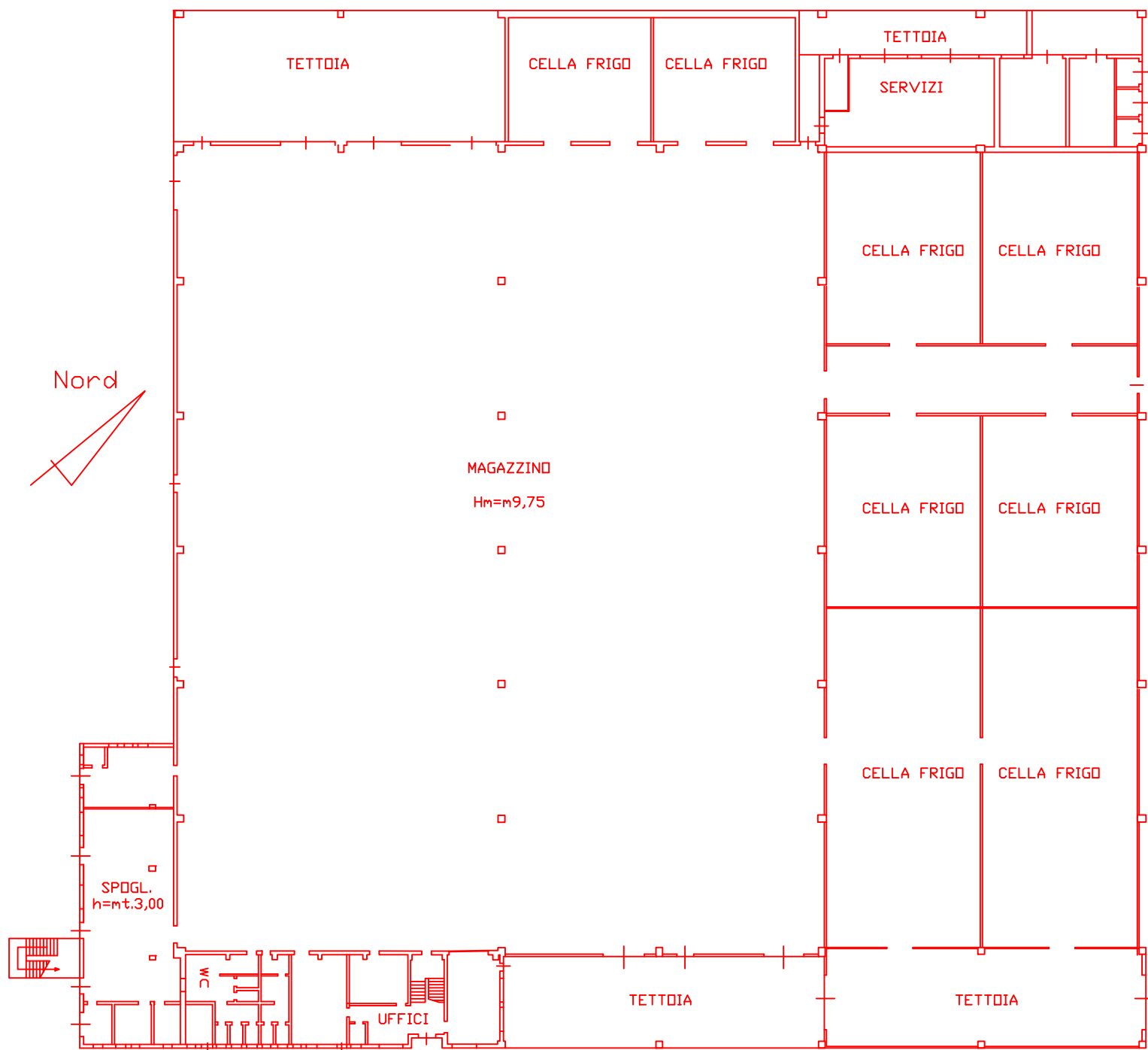
SUP. CABINA C.B. = mq. 11

VOL. CABINA C.B. = mc. 32

# PIANO PRIMO CORPO "A"



SUP. UFF. I° PIANO = mq. 344  
VOL. UFF. I° PIANO = mc. 1,135  
SUP. SCALA EST.= mq. 16



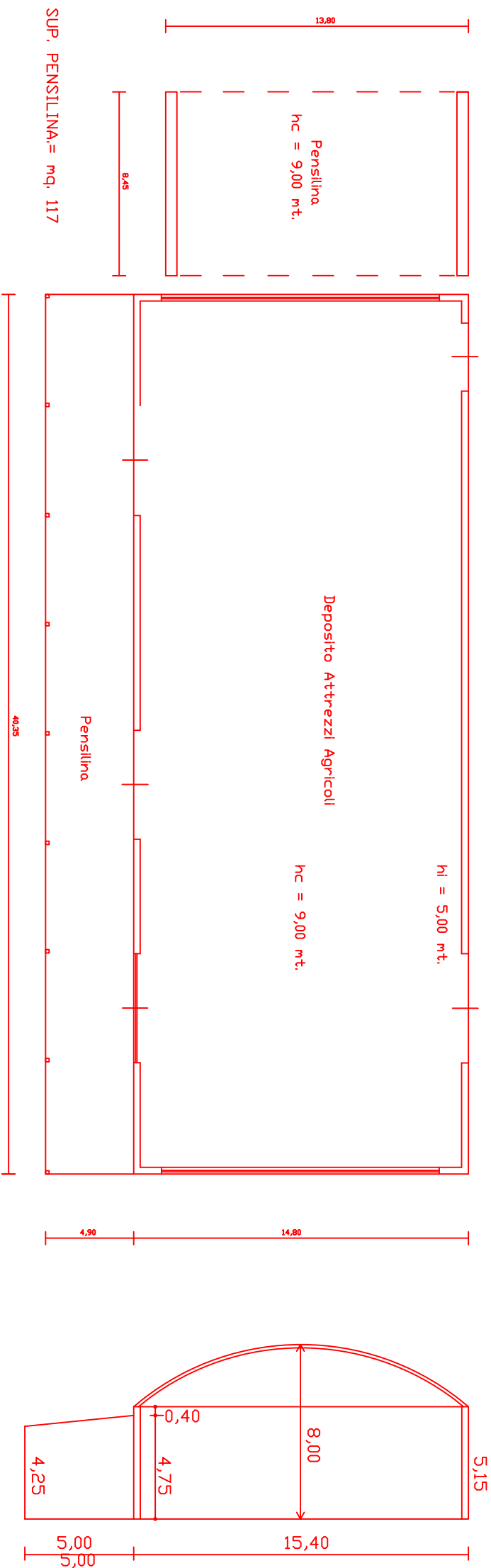
## PIANO TERRA CORPO "A"

SUP. UFF.-SERV. PIANO T.= mq. 344  
VOL. UFF.-SERV. PIANO T. = mc. 1.135  
SUP. SCALA EST.= mq. 16

SUP. MAGAZZINO.= mq. 2.989  
VOL. MAGAZZINO = mc. 29.143  
SUP. CELLE FRIGO= mq. 1.646  
VOL. CELLE FRIGO = mc. 16.058  
SUP. SERVIZI ESTERNI= mq. 207  
VOL. SERVIZI ESTERNI = mc.1.858

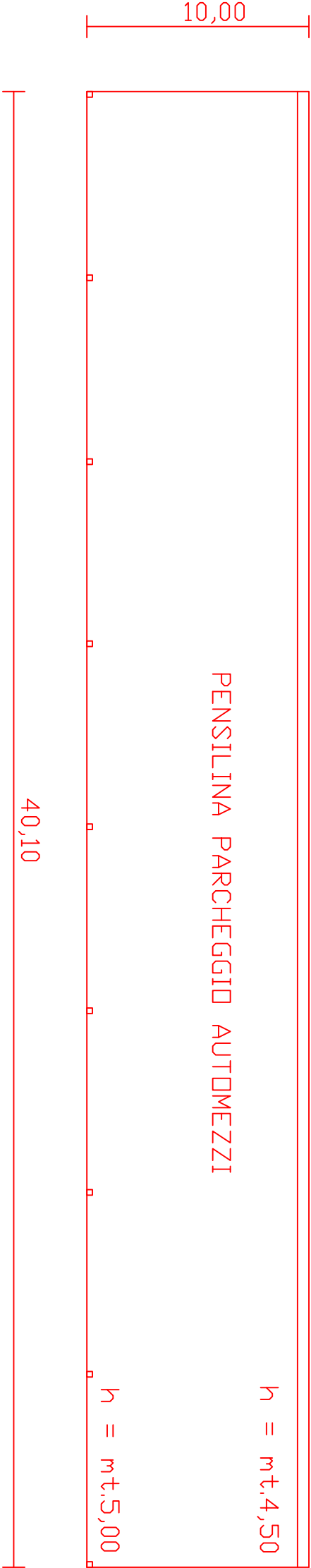
SUP. TETTOIE= mq. 649

# CORPO "B"



# PLANIMETRIA CORPO "C"

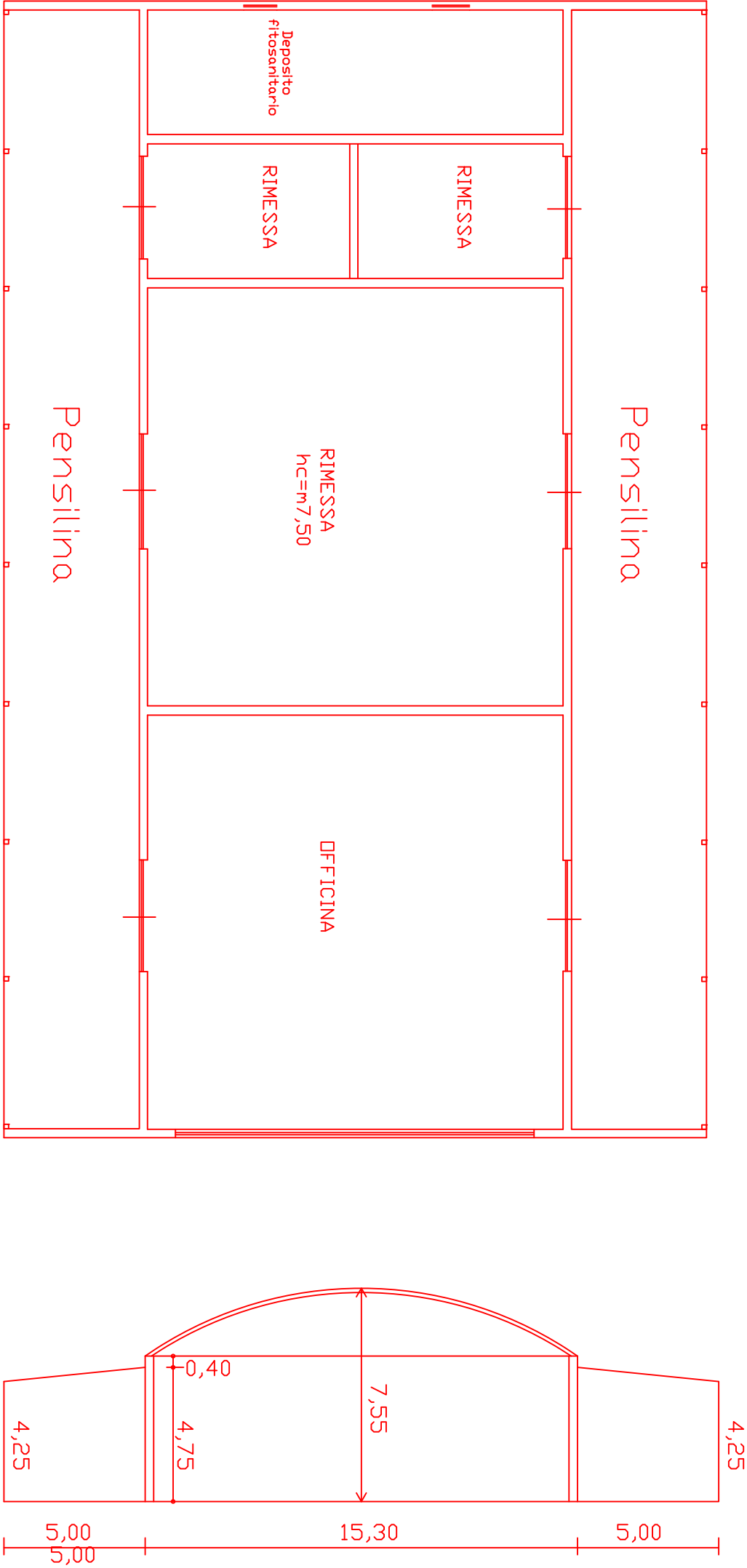
Fg. 62 p.lla 61



SUP. PARCHEGGIO = mq. 401

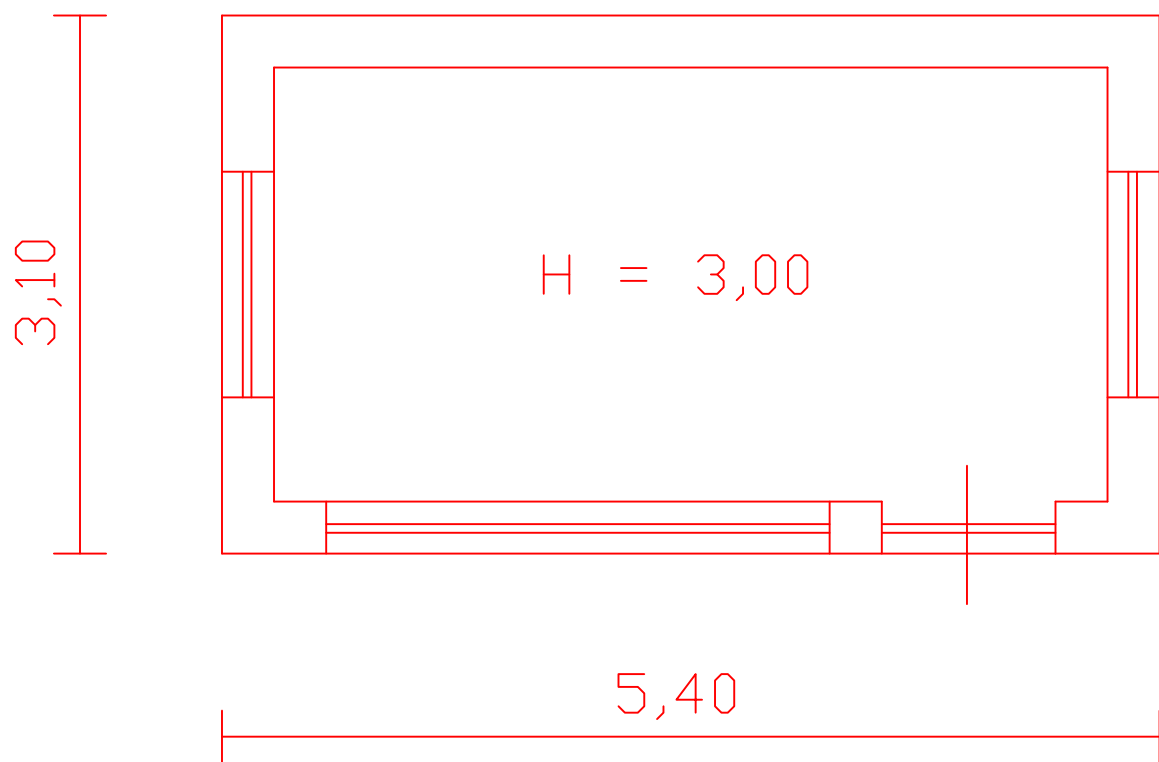


PLANIMETRIA + SEZIONE CORPO "D"





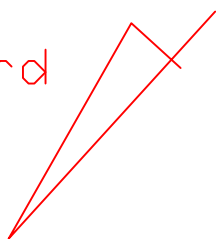
# CORPO "E" - PESA



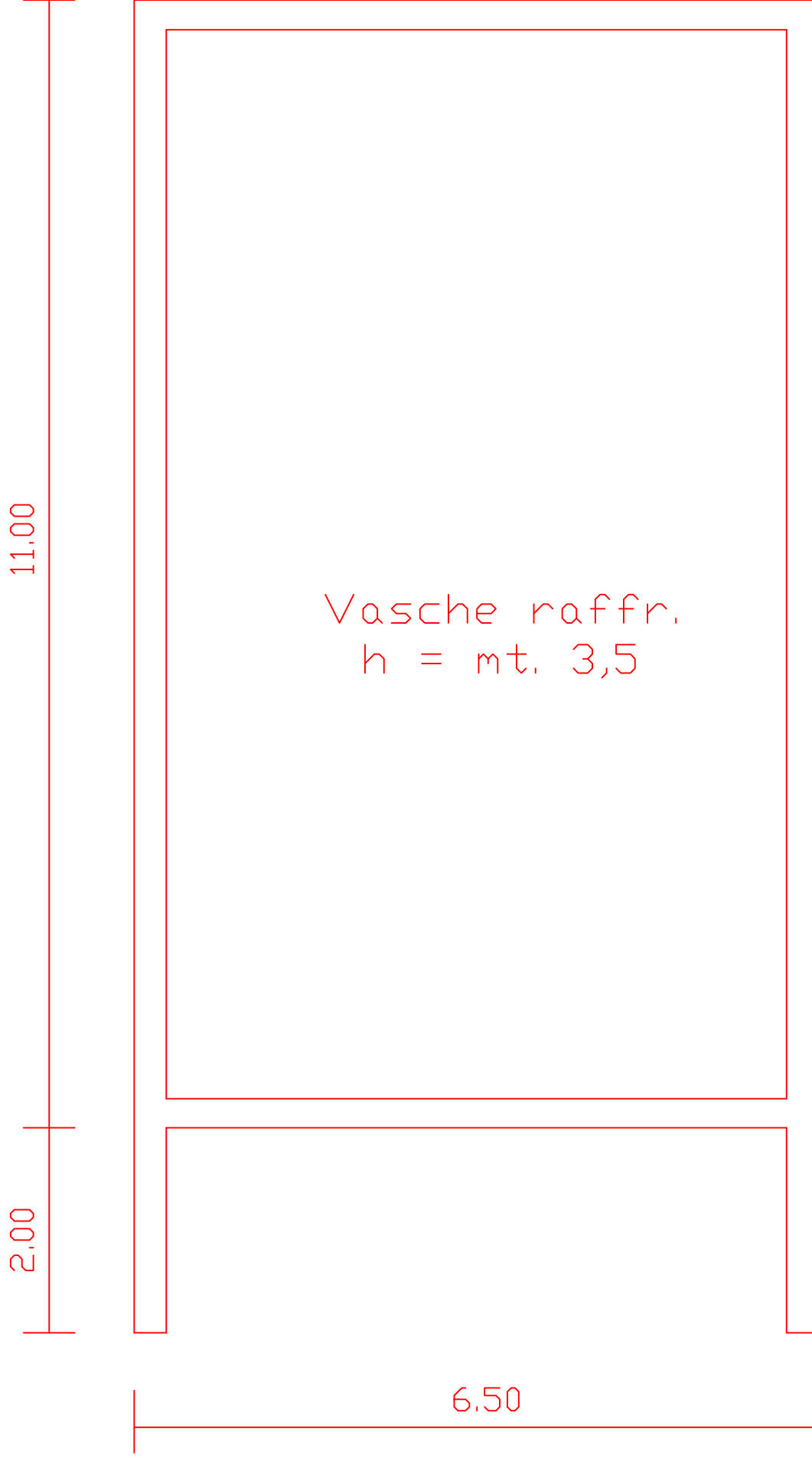
SUP. PESA = mq. 17

VOL. PESA = mc. 50

Nord



# CORPO "F"

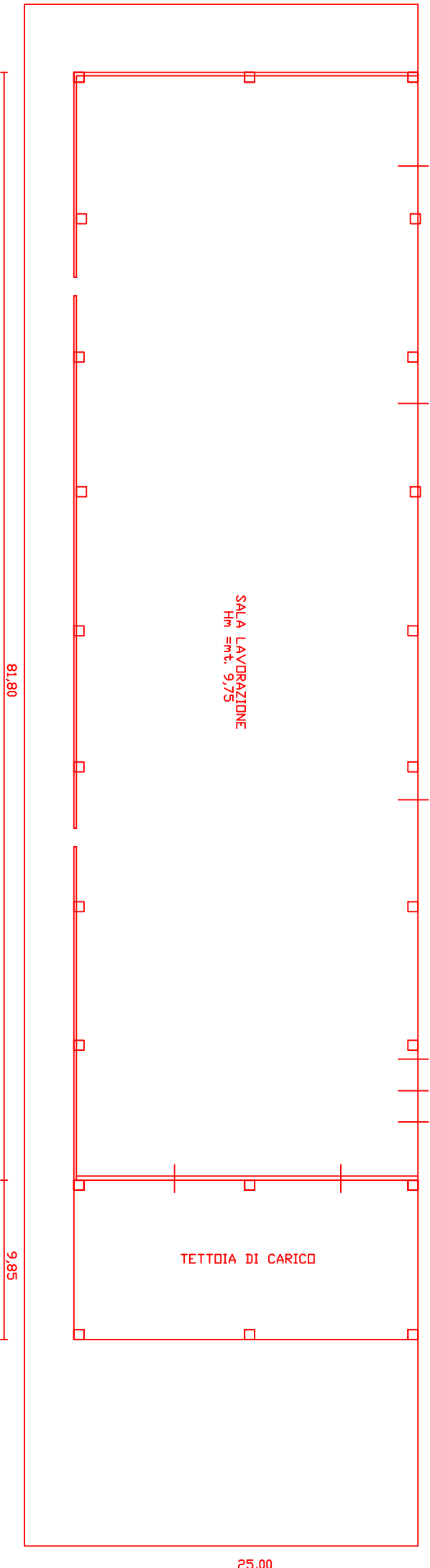


SUP. VASCA = mq. 84  
VOL. VASCA RAFFR. = mc. 396

# CORPO "G" - SALA LAVORAZIONE

SALA LAVORAZIONE  
Hm = mt. 9,75

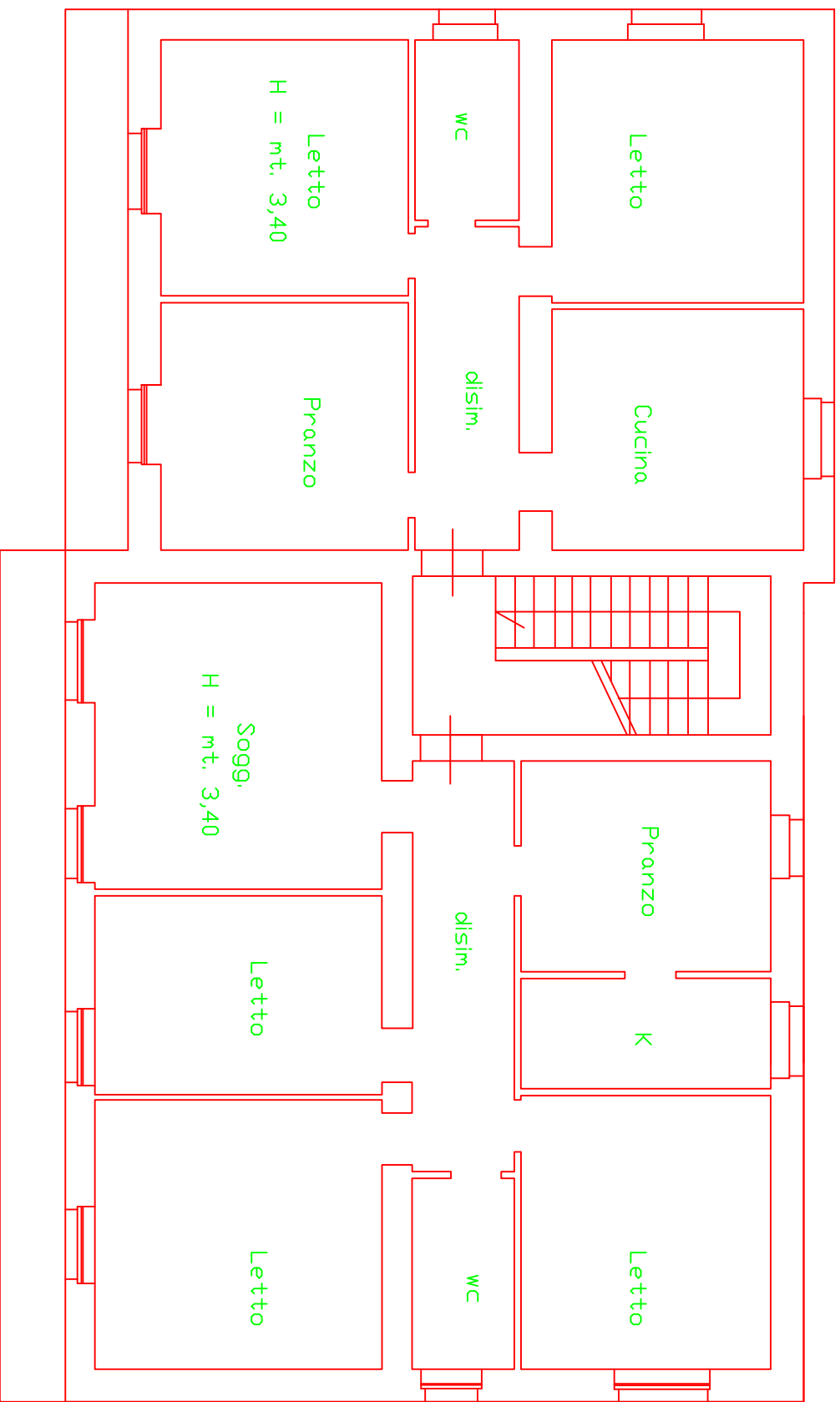
TETTOIA DI CARICO



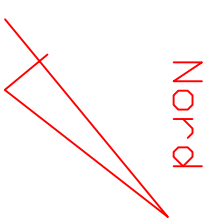
SUP. SALA LAV.= mq. 2,045  
VOL. SALA LAV.= mc. 19,427

SUP. PENSTILINA= mq. 250

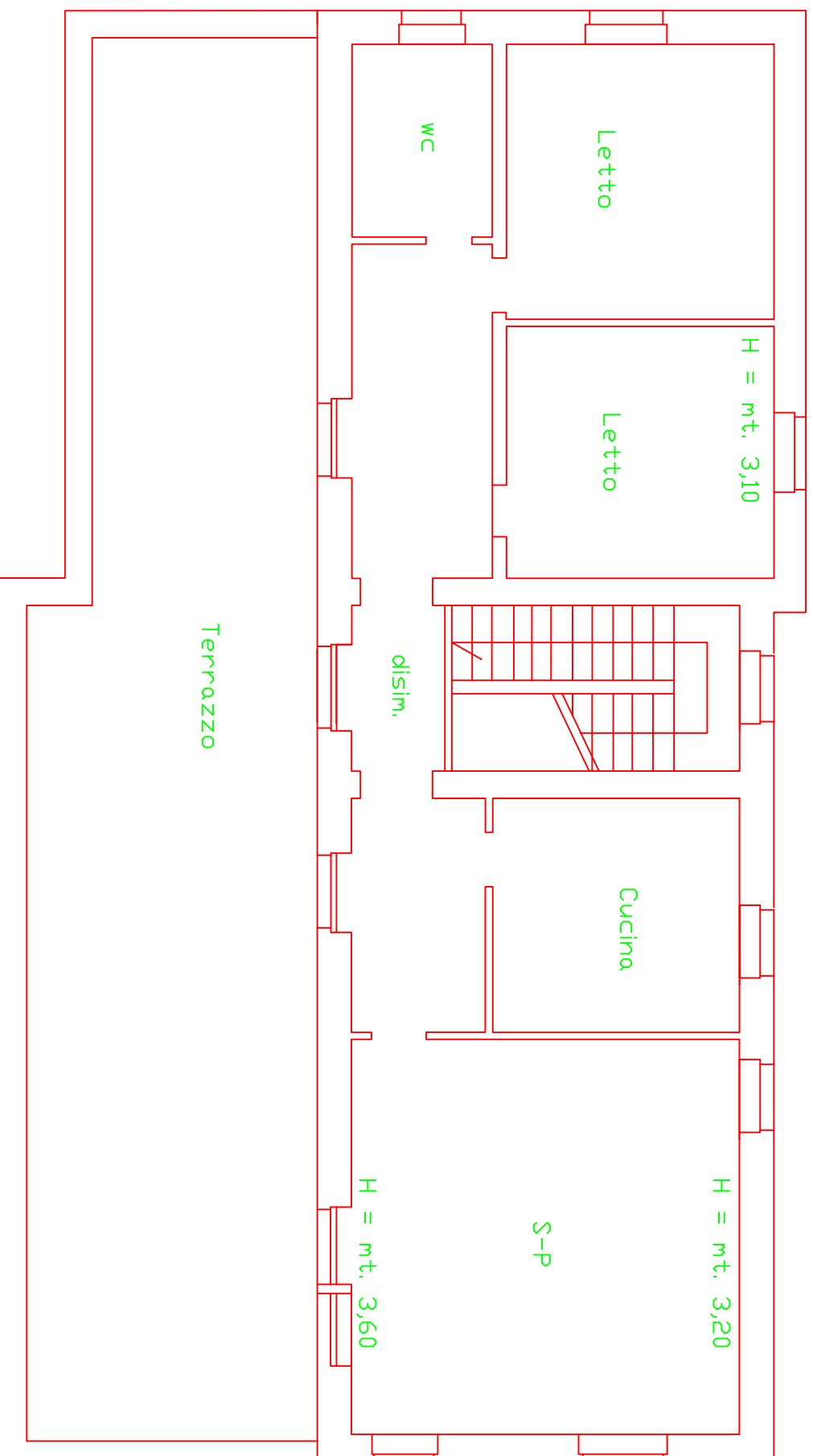
# PIANO PRIMO



SUP. LORDA DI PIANO = mq. 246  
VOLUME LORDO DI PIANO = mc. 910  
SUP. BALCONI = mq. 21



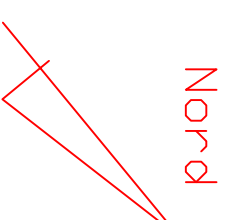
# PIANO SECONDO



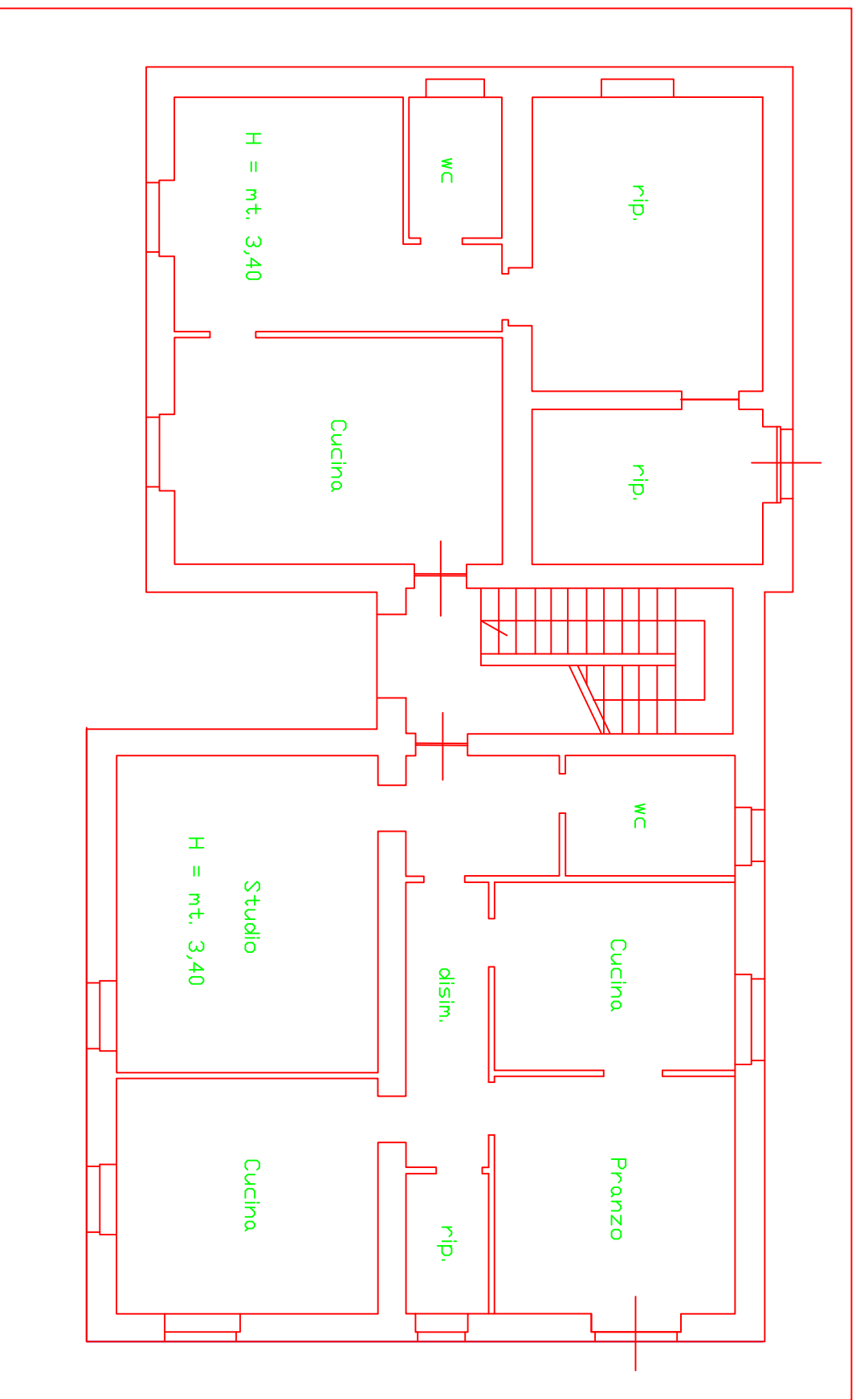
SUP. LORDA DI PIANO = mq. 58

VOL.  $[58 \times (3,9 + 3,5)/2] = mc. 215$

SUP. TERRAZZA = mq. 95



# PIANO TERRA



SUP. LORDA DI PIANO = mq. 234

VOLUME LORDO DI PIANO (H=3,70)= mc. 866

